

Product Description

10L Ultrasonic Cleaner For Eyebrow Tweezers In Beauty Salon With 200W Heating Power Stainless Bench Top



Model	Capacity	Tank Size	Ultrasonic Power	Heating Power	Frequency	Tank thickness	Material
	(L)	(L*W*H)mm	(W)	(W)	(KHz)	(mm)	SUS304
JP-008	0.8	150*85*65	35	0	40	1	SUS304
JP-009	0.9	150*135*65	60	100	40	1	SUS304
JP-010T	2	150*165*100	60	100	40	1	SUS304
JP-020S	3.2	240*135*100	120	100	40	1	SUS304
JP-030S	4.5	300*150*100	180	200	40	1	SUS304
JP-031S	6.5	300*150*150	180	200	40	1	SUS304
JP-040S	10	300*240*150	240	200	40	1	SUS304
JP-060S	15	330*300*150	360	300	40	1	SUS304
JP-080S	22	500*300*150	480	500	40	1	SUS304
JP-100S	30	500*300*200	600	500	40	1	SUS304

How much ultrasonic power does your cleaning tank require?

The right amount of ultrasonic energy (usually expressed in watts/gallon) depends on the size of the cleaning bath and the difficulty of the cleaning requirement. Tanks in the one- to two-gallon range often provide up to 90 watts per gallon of ultrasonic power, plenty for most jobs, even cleaning out the ultra-fine passages of fuel injector nozzles.

"Achieving the same cleaning effect in larger tanks requires less energy density," Pedeflous noted. "Excellent cleaning has been demonstrated in tanks having 50 gallons capacity with only 25-30 watts per gallon. The more difficult the application, the greater energy density is required for effective cleaning."

On the other hand, too much ultrasonic power may result in cavitation erosion occurring on delicate or highly polished parts that are near the transducer-radiating surface. Cavitation is the formation and collapse of low-pressure bubbles that can pit the surface of metals. Aluminum, copper, brass and other soft metals are especially susceptible to cavitation erosion.

Product Show:



HEATING SYSTEM

Built-in heating board, You can adjust the heating water temperature from 20 to 80°C. It's efficient to remove oil and wax

Heating board

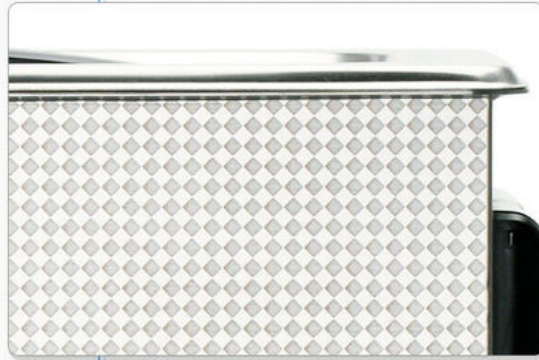


Product details

1.

Printed surface stainless steel

fingerprint and dirt resisting



2.

SUS304 inner tank

non-welded stamped tank
features corrosion and heat
resisting

3.

Heat emission design

heat emission holes at the bottom increase working life



4.

Drain valve

The drain valve is made of high quality copper, corrosion-resistant and switch adjustable



Water should not cover it



New Upgrade And Tilted Touch Control Pannel

Angle of 20 degrees tilted,user-friendly



JP-040S 10L Product Show

Heating power
200W

Ultrasonic power
240W

Transducer
4 Pcs



PAY ATTENTION ON DETAILS

01

Insulated handle design

Anti-static and anti-high temperature, more secure



02

Stainless steel drain valve

One-half inch large drain valve, quicker to drain

03

Cooling vents

Fast heat dissipation, protecting the circuit board and enhancing the service life

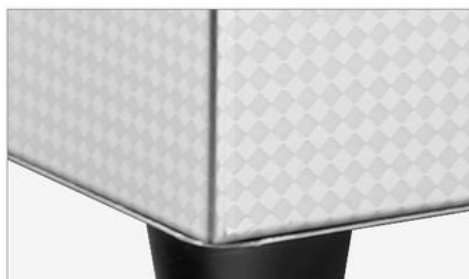


04

Heat - resistant power cord

One-half inch large drain valve, quicker to drain

05



Non-slip anti-shock pad

Non-slip, safer



Safety switch

With ground insurance switch



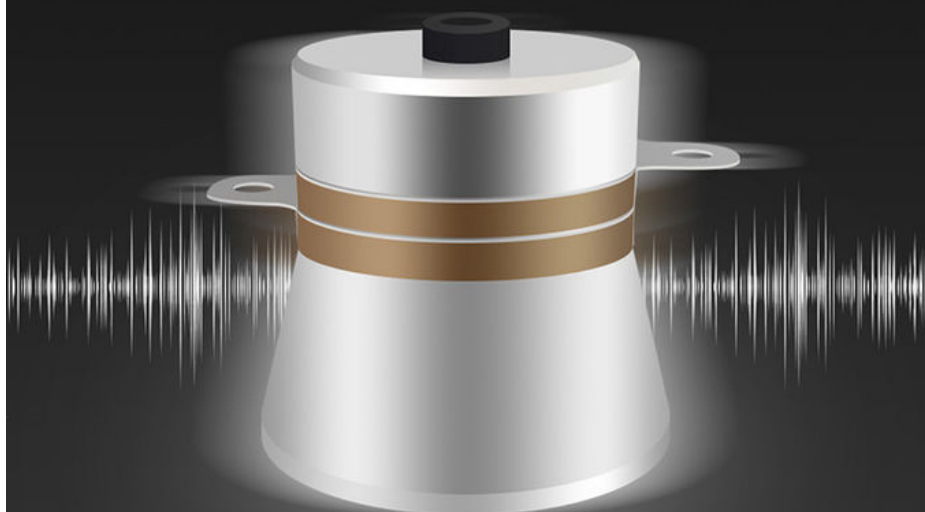
Stainless steel cleaning basket

Fine workmanship and durability



INDUSTRIAL TRANSDUSER

Strong cleaning resistance, good durability with powerful cleaning effect.



Frequency
40kHz

Ultrasonic power
240W

Transducer
4 Pcs

HEATING SYSTEM

Built-in heating board, You can adjust the heating water temperature from 20 to 80°C. It's efficient to remove oil and wax



Heating temperature
20-80°C

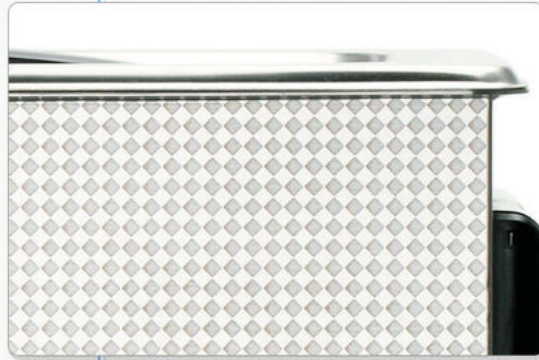


Heating power
200W

Product details

1.

Printed surface stainless steel
fingerprint and dirt resisting



2.

SUS304 inner tank

non-welded stamped tank
features corrosion and heat
resisting



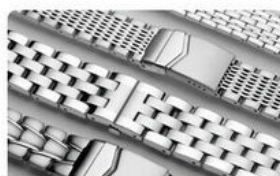
Application Area:

MULTIPURPOSE CLEANING

It's efficient for most of household items that could be used to clean. get the best cleaning effects with the least effort.



Glasses



Watchband



Jewelry



Tableware



Toothbrush



Denture



Shaver



Bottles&nipples



Nail Tools

Before



After





Before



After



Before



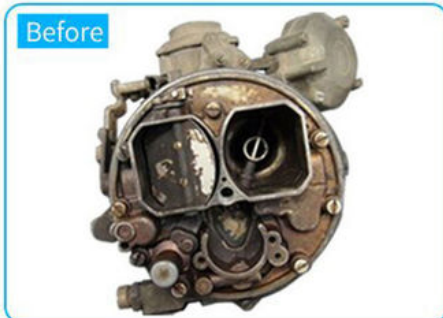
After



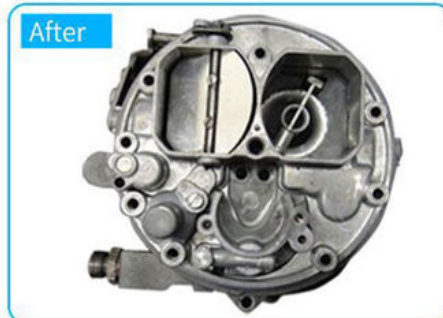
Before



After



Before



After



Before



After



Before



After



COMPARISON OF CLEANING EFFECT





Suitable for varieties of palces



Factory



Labs



Hardware store



PRODUCT FEATURES

- 1 mechanical timing:
The working time adjustable from 0-30 minutes or normal open mode.
- 2 mechanical control:
mechanical control heater, 20-80 adjustable, temperature error within ± 2
- 3 high quality bath:
High quality SUS 304 stainless steel punch forming bath with noise proof
- 4 anti-skid treatment:
the machine is steady with the non-slip, shock-proof, anti-static, pressure-proof mats at the bottom
- 5 ceramic heater:
New ceramic heater is stable and efficient
- 6 Humanized design, remarkable cleaning effect:
Tank capacity over 6L with the drain valve; high cleaning efficiency, no harm to surface

Industrial Ultrasonic Cleaning Machine



Model	Capacity (L)	Tank Size (L*W*H)mm	Transducers (pcs)	Ultrasonic Power (W)	Heating Power (W)	Tank thickness (mm)	Frequency (KHz)
JP-120ST	38	500X300X250	12	600	1500	2	28/40
JP-180ST	53	500X350X300	18	900	1500	2	28/40
JP-240ST	77	550X400X350	24	1200	3000	2	28/40
JP-300ST	99	550X450X400	30	1500	3000	2	28/40
JP-301ST	99	800X300X400	30	1500	3000	2	28/40
JP-360ST	135	600X500X450	36	1800	4500	2	28/40
JP-480ST	175	700X500X500	48	2400	6000	2	28/40
JP-600ST	264	800X600X550	60	3000	6000	2	28/40
JP-720ST	360	1000X600X600	72	3600	9000	2	28/40
JP-1108ST	540	1000X900X600	108	5400	18000	2	28/40
JP-1144ST	960	1200X1000X800	144	7200	27000	2	28/40

Immersible Transducer Plate

Image:



Model	Plate Size (L*W*H)mm	Transducers (pcs)	Ultrasonic Power (W)	Generator (set)	Suitable tank (L)
JP-1006I	305*205*100	6	300	1	10~15
JP-1012I	355*305*100	12	600	1	30~40
JP-1018I	340*280*100	18	900	1	60~70
JP-1024I	430*280*100	24	1200	1	70~80
JP-1030I	460*370*100	30	1500	1	90~100
JP-1036I	550*450*100	36	1800	1	130~140
JP-1048I	600*450*100	48	2400	2	170~180

Immersible Transducer Tube

Image:



Model	Tube Size	Transducers	Ultrasonic Power	Generator	Length of wire
	(D*H)mm	(pcs)	(W)	(set)	(M)
JM-1003	57*180	3	150	1	1.5
JM-1006	57*300	6	300	1	1.5
JM-1012	57*550	12	600	1	1.5
JM-1018	57*750	18	900	1	1.5
JM-1024	57*1000	24	1200	1	1.5
JM-1036	57*1520	36	1800	1	

Immersible Transducer Plate/tube can be put in any tank, but it doesn't have heating function.

The price of tube is much higher than plate, Ultrasonic Tube is only used for special purpose, such as in Lab.



SkyMen Technology Corporation Limited



86-755-27094405



info@skymen.cc



skymenultrasonic.com

Floor 1st & 2nd, Building 3, Tanggang Taifeng Industrial Park, Dawangshan Community, Shajing Street, Bao'an District, Shenzhen